
CRITERION II – TEACHING-LEARNING AND EVALUATION 2.7.1 STUDENT

SATISFACTION SURVEY FOR GOVT. COLLEGE KULLU AQAR (2023-24)

Students Satisfaction Survey (SSS) was conducted among the students of the college through the College website. The questionnaire has been framed based on NAAC guidelines. Students have rated the question in a scale of 0 to 4. The result of this survey is based on the response of 1478 students.

Number of responses received for the (SSS) survey =1478

SCORE SHEET

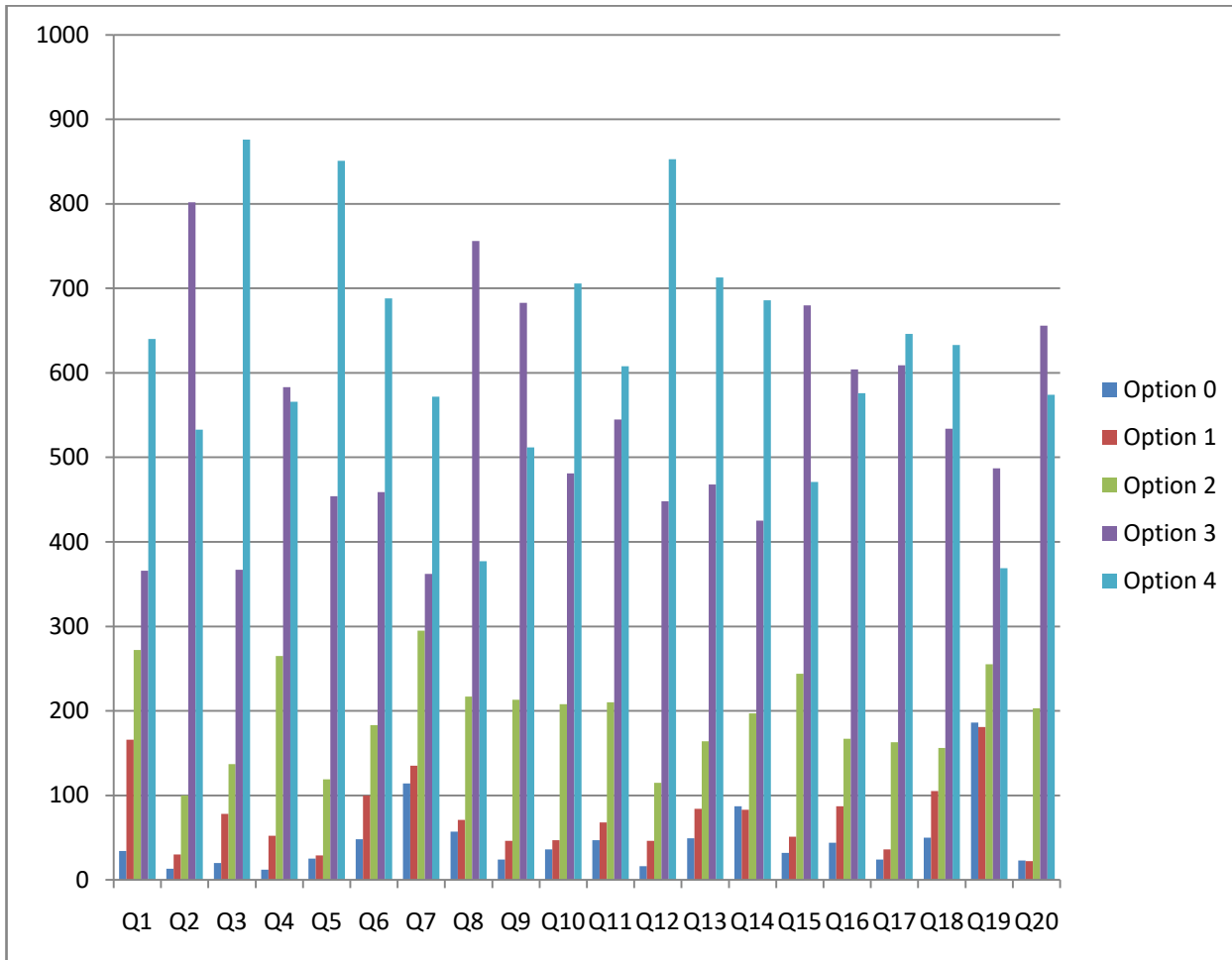
Questions	Average Score	Previous Average	Change
1. How much of the syllabus was covered in the class?	2.955	3.52	-16.04%
2. How well did the teachers prepare for the classes?	3.226	3.24	-0.43%
3. How well were the teachers able to communicate?	3.354	3.38	-0.77%
4. The teacher's approach to teaching can best be described as	3.109	3.11	-0.03%
5. Fairness of the internal evaluation process by the teachers.	3.405	3.42	-0.43%
6. Was your performance in assignments discussed with you?	3.109	3.15	-1.30%
7. The institute takes active interest in promoting internship, student exchange, field visit opportunities for students.	2.773	2.77	+0.12%
8. The teaching and mentoring process in your institution facilitates you in cognitive, social and emotional growth.	2.896	2.9	-0.12%
9. The institution provides multiple opportunities to learn and grow.	3.091	3.06	+1.02%
10. Teachers inform you about your expected competencies, course outcomes and programme outcomes	3.200	3.22	-0.61%
11. Your mentor does a necessary follow-up with an assigned task to you.	3.082	2.99	+3.07%
12. The teachers illustrate the concepts through examples and applications.	3.405	3.38	+0.73%
13. The teachers identify your strengths and encourage you with providing right level of challenges.	3.158	3.16	-0.05%
14. Teachers are able to identify your weaknesses and help you to overcome them.	3.042	3.03	+0.39%
15. The institution makes effort to engage students in the monitoring, review and continuous quality improvement of the teaching learning process.	3.020	3.01	+0.32%

16. The institute/ teachers use student centric methods, such as experiential learning, participative learning and problem solving methodologies for enhancing learning experiences.	3.070	3.04	+0.98%
17. Teachers encourage you to participate in extracurricular activities.	3.229	3.23	-0.02%
18. Efforts are made by the institute/ teachers to inculcate soft skills, life skills and employability skills to make you ready for the world of work.	3.079	3.07	+0.30%
19. What percentage of teachers use ICT tools such as LCD projector, Multimedia, etc. while teaching	2.455	2.28	+7.66%
20. The overall quality of teaching-learning process in your institute is very good.	3.175	3.15	+0.78%
Over All	3.092	3.106	-0.45%

FREQUENCY ANALYSIS

	Option 0	Option 1	Option 2	Option 3	Option 4
Q1	34	166	272	366	640
Q2	13	30	100	802	533
Q3	20	78	137	367	876
Q4	12	52	265	583	566
Q5	25	29	119	454	851
Q6	48	100	183	459	688
Q7	114	135	295	362	572
Q8	57	71	217	756	377
Q9	24	46	213	683	512
Q10	36	47	208	481	706
Q11	47	68	210	545	608
Q12	16	46	115	448	853
Q13	49	84	164	468	713
Q14	87	83	197	425	686
Q15	32	51	244	680	471
Q16	44	87	167	604	576
Q17	24	36	163	609	646
Q18	50	105	156	534	633
Q19	186	181	255	487	369
Q20	23	22	203	656	574

FREQUENCY DISTRIBUTION



SHORT SUMMARY:

- 16 Questions have average score more than 3.
- 4 Questions have average score less than 3.
- 10 Questions had improved score over last year.
- 10 Questions had reduced score over last year.
- Best score on Question 5 and Question 12.
- Lowest score on Question 19.
- Largest score improvement on Question no. 19 (7.66%)
- Largest score drop on Question no. 1 (-16%)